



Welcome

Welcome to your Organisers Pack for LFA2025: a quick-reference document to help you get the most out of your involvement in the Festival.

In the pack, you'll find an overview of the Festival, ideas of how to get involved in LFA2025, and event inspiration from 2024, as well as LFA event FAQ and all key dates.

Contents

- 3** What is the London Festival of Architecture?
- 4** Who is the Festival for?
- 5** LFA2025 overview and theme
- 6** How can you get involved in LFA2025?
- 7** Event submission process
- 8** Why put on an LFA event?
- 9** What events can be part of LFA?
- 10** Event highlights
- 13** Ready to start creating your LFA event?
- 14** LFA2025 Key Dates
- 16** LFA event FAQ
- 18** Still need inspiration for your event?
- 19** Keep in contact



What is the London Festival of Architecture?

The London Festival of Architecture (LFA) is a month-long celebration of architecture and city making, taking place every June across London.

Our mission is to act as a vehicle for change, by making discussions around architecture more accessible, providing the platform to test new ideas, and promote emerging talent, with an aim to move towards a more equitable and sustainable city.

LFA is a collaborative platform for ideas and exploration that interrogates the role of the city while looking forward with hope, so we can make our city greener, healthier, and more equitable. We build long-lasting relationships with event organisers across London and work year-round to empower people to realise their visions and goals for LFA. Ultimately, our aim is to generate positive long-lasting change for visitors and residents alike.

LFA is run by NLA – London’s built environment community. The Festival returns to London on 1–30 June 2025.



Who is the Festival for?

The Festival is for everyone interested in shaping the future of our city. It unites industry professionals, students, and Londoners to collaboratively engage with and create positive change in our city's unique neighbourhoods.

The Festival expands on the traditionally understood concept of 'architecture' through discovery, debate, learning, and activism open to all, giving agency to the public, alongside the industry, to challenge, interrogate, and celebrate their city.

From its founding in 2004, LFA has worked with boroughs, developers, architects, and community groups to provide a platform for discourse and meaningful change. Together we have built temporary architectural interventions, public realm improvements, outdoor exhibitions, walking tours and workshops, and facilitated the development of rich cultural programmes which bring together the public and the profession. For us, architecture goes beyond the skeleton of a building, it is the in-between spaces, the landscapes, the people who make them, work and live in them.



LFA2025 overview and theme

LFA returns in June 2025, with a month-long series of events, installations, and other activities. Happening across the whole of the city, LFA activity will provide opportunities to celebrate, challenge, and create, guided by the LFA2025 theme.

For LFA2025, we will be exploring the theme of **'voices'**. This annual theme was selected collaboratively with our LFA2025 Curation Panel, which includes representatives from across the industry and beyond. You can find more information about the panel on the LFA website.

As always, we look forward to working with new and existing organisers to delivery their own Festival activity as part of LFA2025. We've already had some exciting conversations with existing organisers and can't wait to see all the proposals when the Open Call goes live in January.

Over the next few months, we'll be sharing some resources, top tips for events, and reflections on the theme to inspire and support you with your own LFA event(s). To kick us off, we've put together some initial thoughts exploring our 2025 theme.

LFA2025 Theme: Voices

Architecture is not only about creation; it's about listening, amplifying, and intertwining the **voices** that make up our spaces, stories, and neighbourhoods. At present, where diverse perspectives are both essential and vulnerable, we must explore how different voices complement, contradict, and evolve together.

Collectively, we must interrogate questions such as:

- What new possibilities can emerge when we create space for those previously underrepresented and unheard?
- How do we ensure that the right people are meaningfully in the room when key decisions are made?



- In light of tragedies like Grenfell, what do we need to unlearn and rethink about who holds influence in architecture?
- And much much more.

LFA2025 will once again bring together architects, engineers, designers, activists, and Londoners to shape the future of our city. We invite our Festival community to engage in these uncomfortable, yet necessary, questions as we rethink how architecture is understood, spoken about, and practiced.

We look forward to unpacking these ideas collectively. Together, we can amplify the people and voices that have long been overlooked, create new systems and frameworks, and build more equitable spaces for all.

[Read more on the LFA website here](#)

How can you get involved in LFA2025?

Organise an event or project

Each year we work to empower new individuals and organisations to stage their own Festival events. In January 2025 we will open our Open Call for events to be part of LFA2025.

In this pack you can find information on what activity can be part of LFA, what we expect from organisers, and examples of highlight events from previous editions of the Festival. Additionally, you can also find out the first steps to making your LFA2025 event a reality.

Shape the future of your area

Building on from our Call to Action in 2024, this year we're encouraging people to collaborate on projects which bring new voices into the conversation around the future of our local spaces, and how they can work better for us all – from kerbsides to highstreets, playgrounds to doorways. Further information on the Call to Action will be announced in November.

Support the Festival

LFA could not happen without the contribution of our generous supporters and partners who make the Festival possible. Each year we work with a range of emerging and established organisations from within and beyond the industry to deliver the festival. Supporting LFA is a great way to engage in some of the most important conversations in the industry and the wider world, while celebrating London as global hub for architecture.

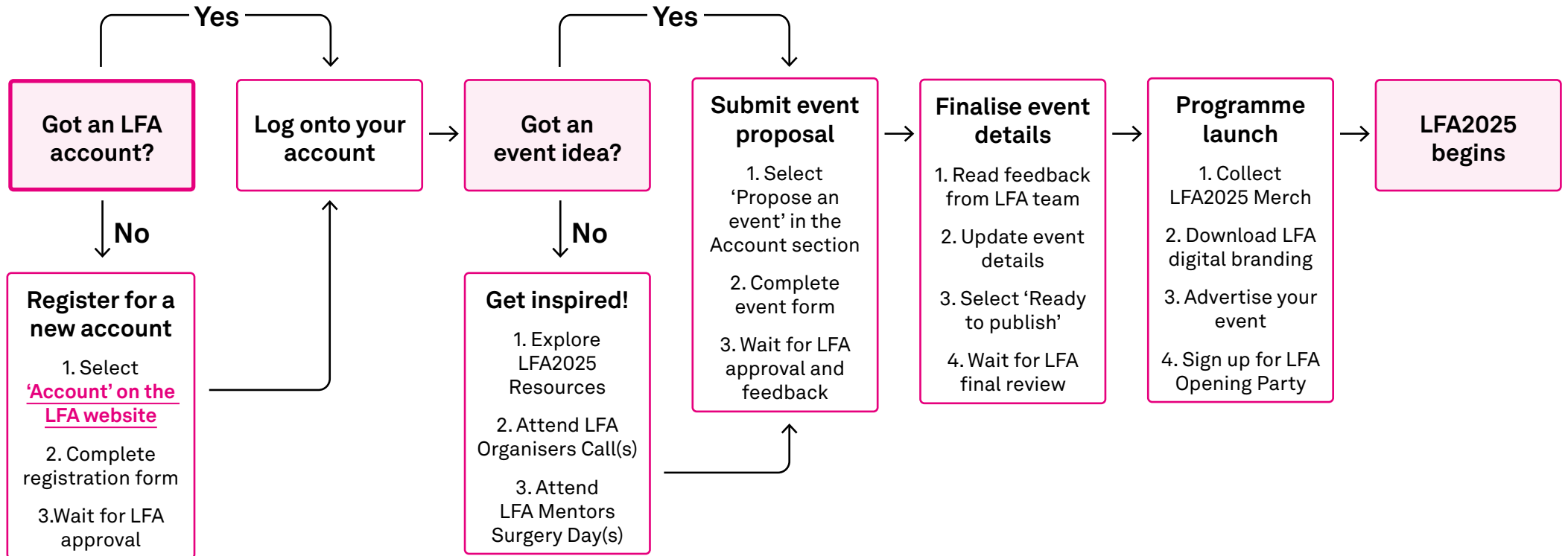
We have a variety of sponsorship packages which help support the Festival, to find out more head to the [Supporters page here](#) on our website, or alternatively email shannan.wood@nla.london.



Attend

The LFA2025 programme will go live in May 2025 – where you will be able to save and book your favourite activities to be part of. To be the first to hear about the programme, make sure to [sign up to the LFA newsletter here](#).

Event submission process



Why put on an LFA event?

All our event organisers have a different motivation for organising an event or project as part of LFA.

- Architecture practices and industry organisations might want to showcase their latest innovations or research, demystify the work they're doing, or create space for discussion around alternative ways of designing and making.
- Local neighbourhood or activist groups may want to talk about a cause that we should know more about or just want to share their local area with a range of other Londoners.
- Schools of architecture or design may use the Festival to showcase some of the innovative work being done by students and test out some of these ideas in real life. This is a great opportunity to literally take learning outside of the classroom.
- Museums and cultural organisations often use the month of June as an opportunity to think about architecture and the city in the context of their space or collection. Embassies often use the Festival to showcase some of the most innovative works by architects from their home countries.
- Others might be focused on tackling some of the issues of our day or empowering the next generation of architects. LFA has a proud record of helping many people launch their idea or company during the Festival.

But don't just take our word for it, hear from some of our previous organisers about why they got involved with LFA:

“LFA is a great way to connect with the architecture and engineering profession, as well as students and members of the public. It helps to demystify what we do and grow the conversation around the built environment.”

Christopher Moore, Price & Myers

“A great opportunity to connect with a wide range of people who otherwise might not stray into our little corner of London.”

Alan Pottinger, Friends of Betts Park

“As a resident of Haringey, I've been keenly involved in many architectural projects in the borough that have shared authorship with local people, particularly around Wood Green. I was thrilled to be part of many powerful discussions and events for this LFA, ones that were curated with local residents in order to examine the cultural heritage of their diverse communities and steps to safeguard its future.”

Jonathan Hagos, Freehaus Design

“Being part of LFA has been great for reaching new audiences. So many attendees said they heard about our event because of LFA, many came with a very positive attitude and were genuinely interested in the theme of 'reimagine' and how we should adapt our built environment.”

Eleanor Lionel, The Building Centre

What events can be part of LFA?

Each year the Festival programme includes workshops, tours, debates, talks, installations, film screenings, exhibitions, and so much more. Over the next three pages are examples of highlight events from previous editions of the Festival that have come through our open call.

What we're looking for:

- Activity which creates safe spaces for conversation, creation, and collaboration, breaking down barriers on processes and architectural languages.
- Activity for a range of people, whether focused on empowering and equipping young people, upskilling on more sustainable materials and processes, opening up spaces to families and children, inviting local audiences into often closed spaces, etc.
- Activity that sees meaningful cross-industry and cross-sector collaborations between different individuals and organisations, with a focus on long-term change for the city and industry.
- Activity which responds to the New London Agenda, with a focus on: Thinking Beyond Boundaries, Valuing Diversity, Focusing on Health, Planning for Future Generations, Leveraging Innovation, and Working in Partnership. [Learn more about the New London Agenda here.](#)
- Activity which rethinks architectural events – whether that is leading with different mediums such as music or food, or event timings – for example exploring 'Library Lates' (or other spaces that usually shut at 6pm), creating safe spaces for young people after school and working hours.
- Activity which celebrates good design, best practices in sustainable materials and inclusive ways of designing and using space, and that platforms emerging designers, architects, and wider voices.

What we're not looking for:

- Events just by the industry for the industry, with the aim of promoting one practice, way of thinking or set of similar voices. For example, we will not accept three of the same type of person or organisation.
- Events which include too much architectural jargon.
- Events which are vague. No event will be reviewed or accepted if they are blank, have no panel, or are as vague as 'talk on theme' and will have to resubmit. The only information that can be left open is location (if still seeking a home), timings/date (if not confirmed yet), and booking link.
- More than 30 panel discussions or talks in the programme. We will have a maximum of two morning and two evening talks per day, and encourage alternative formats of activity, such as workshops, tours, performances, etc.
- Activity which is not accessible, either in its content or physicality. Attendees need to be able to access the event, know what access provisions have already been made and are available on the day, and feel comfortable when they are there. [Read our guide to inclusive events here.](#)
- Activity that is unclear – whether that is around the length of the event, the location of the event, what people should expect from the event, or what accessibility and sustainability considerations have been made.

Event highlights



Youth Voices: Shaping Tomorrow's Wood Green

TALK AND PERFORMANCE

This youth panel event explored Wood Green through the lens of Haringey's dynamic young voices. Curated by the young people of Rising Green Youth Hub, individuals delivered thought-provoking discussions and performances, creating space for participants to meaningfully contribute to shaping a more inclusive and resilient future for Wood Green, one informed by its young people.



Reimagining artsdepot

WORKSHOP

With the help of Edgy Collective, Barnet Council and LFA, artsdepot set aside a day to ask their community what they should do to enliven the outside of their building. Inspired by the #LFAat20 Call to Action, this event used LFA as a stimulus for engagement and ideas, with over 200 people engaging with the project to inspire their landlords to brighten up the concrete.



The World on the Upper Terrace

WALKING TOUR

This walking tour saw History Speak lead attendees to discover the untold stories of 24 statues that once stood on the Upper Terrace in Crystal Palace Park – and highlight how Empire, Race and Nation were represented 170 years ago. The event was followed by a workshop collectively reimagining the Upper Terrace of the future in the Crystal Palace Museum.

Event highlights



Co-Existing Identities

TOUR AND TALK

Led by Brent Council, this event saw a unique tour of the Shri Sanatan Hindu Mandir Temple in Wembley, followed by a panel discussion that brought together four local speakers to unpack topics such as the must-have elements to build a long-term sense of belonging amongst the different communities, and how religious buildings play a vital role in shaping local areas, serving as focal points for community engagement, social cohesion, and cultural understanding.



Build Together: Community Building with Natural Materials

WORKSHOP

This workshop saw Global Generation invite attendees to explore how we can create more sustainable buildings through a live build in King's Cross. Participants could learn to build with cob, make wooden shingles, and more, whilst they worked towards creating a new set of buildings using natural and sustainable materials in the Triangle Site at King's Cross.



Evolution in Motion: Sutton Community Dance Performances

PERFORMANCE

This special performance saw Sutton Community Dance activate and reimagine the high street through a 5-6 minute performance across the high street that intertwined the themes of architecture and regeneration, capturing Sutton's evolution. Performances throughout the day celebrated some of the individuals in the area, whilst challenging people to think about the past, present, and future of our spaces.

Event highlights



Dalston Pavilion

INSTALLATION AND WORKSHOPS

One successful project that responded to the LFA2024 Call to Action was the Dalston Pavilion, which saw LSA transform a series of parking bays into a pavilion, which brought the school outside to connect with surrounding communities, create space for workshops for young people, and test out alternative ways of using the space.



Studio Lates

Studio Lates is LFA's open studio programme. Taking place each Thursday in June, the programme invites practices across four clusters of the city to open their doors to the industry, students and public alike for one night only. They are a fantastic way to promote the excellent architectural talent in London while connecting practices with new audiences. Whether it's a workshop, exhibition, drop-in design surgery or a talk — each practice makes their Studio Late their own.

Two great examples of 2024 Studio Lates were 'Sessions – One-to-One Mentoring' and 'Reimagine Fitzrovia's High Streets'.



The former saw Fletcher Priest Architects invite people to rethink how we engage with architectural education and inclusivity in the industry, while Narrative Practice offered in-person complimentary mentoring sessions for young creative professionals in architecture and the built environment, regardless of their background or academic stage. The latter saw Ryder Architects host an interactive workshop around the future of the high street, using activities such as sketching and model making to encourage reflection on personal habits, interests and pain points, and necessary changes needed.

Ready to start creating your LFA event?

Event submission process

We will launch our Open Call on January 9th, asking for event and project proposals which respond to this year's theme 'Voices'.

To submit an event(s) for LFA2024, you will need an account on the LFA website. Accounts are unique to your organisation.

Don't have an account? [You can create an LFA account here.](#)

Once your account has been approved, you will be able to submit your event submission by clicking the button 'Submit my event'.

When you submit your event, you will need to provide us with as much information as possible so that the LFA team come to an informed decision about your event. You can find an LFA Event Submission Checklist in the [Account section of the LFA website here here.](#)

The LFA team will review events within 7 days of being received, so the sooner you submit your event, the sooner you will receive feedback and the status of the event. Please don't leave it until the last moment!

Submission fees and concessions

You need to complete one submission per event, with each event submission charged separately. The submission fee (£180+VAT Early bird, £280+VAT Standard) covers the administrative support of your event, including promotion from LFA and merchandise, as well as organiser perks including admittance to the LFA opening party. Late submissions will be charged at £500+VAT.

LFA is committed to supporting charities, not-for-profit organisations, students, academic bodies, emerging designers, small practices (up to 10 employees), community groups, and individuals who traditionally may not be included in discussions around architecture. Therefore, we offer free of charge submissions to all the above. All NLA members will receive a 30% discount.

If you believe you qualify for a concession rate, you will be able to mark this as you submit your event, and the fee will be removed. If you fall outside the categories outlined above and are unable to pay the fee, please get in touch and we will review on a case-by-case basis. Please note that every submission is reviewed and free submissions will not be approved if the criteria is not matched.

Deadlines

The deadline for submitting a proposal at an early bird rate is 7 February. Standard entries are open until 7 March. Entries from Supporter and Partners continue until 21 March.

LFA is run by a small but extremely hard-working team. We're keen to accept all good event proposals whenever they're suggested, but late entries cause a huge administrative burden on the team. Therefore, all event proposals after 22 March will not be accepted, unless a late fee is charged.

LFA2025 Key Dates

Here are some of the main LFA2025 dates. You can find a full and up-to-date set of Festival dates and deadlines in the [Account section of the LFA website here](#).

October–December 2024

30 October, 4pm

LFA Organisers Call 1

Curious about participating in LFA2025? Join the LFA team, mentors and our community of event organisers to dive into the LFA2025 theme and how you can get involved in the programme, and have a moment for Q&A.

12 November, 1–4pm

LFA Mentor Surgery Day 1

Are you a first time LFA organiser and need help from someone who's done this before? Email info@londonfestivalofarchitecture.org to book a slot, with the subject 'LFA Mentor Session (1)'. In the email, please include your name, brief information on your event and what you're looking for help with/which mentor you'd like to meet with. Alternatively, please call 020 7636 4044 and ask for the LFA team.

January–March 2025

9 January

LFA2025 open call for events and Destinations and Neighbourhoods reveal

Once you've done the preparation for your LFA2025 event submission, this is the moment to share it with the team for review. Head to the [Account section of the LFA website here](#) to submit your event.

16 January, 4pm

LFA Organisers Call 2

Curious about participating in LFA2025? Join the LFA team, mentors and our community of event organisers to dive into the LFA2025 theme and how you can get involved in the programme, and have a moment for Q&A.

w/c 3 February, 2–5pm

LFA Mentor Surgery Day 2

As above, email info@londonfestivalofarchitecture.org to book a slot, with the subject 'LFA Mentor Session (2)'. In the email, please include your name, brief information on your event and what you're looking for help with/which mentor you'd like to meet with. Alternatively, please call 020 7636 4044 and ask for the LFA team.

9 February

Submission deadline for events (early bird)

7 March

Submission deadline for events (standard rate)

22 March

Deadline for Supporter and Partner events, and late events

w/c 24 March

LFA Organiser Call (3) – Marketing and comms Q&A

Want to learn more about how to market your event? Join the LFA team for a session exploring the marketing and promotion of your LFA event. There will also be an opportunity to take questions.

(Continues overleaf)

LFA2025 Key Dates (continued)

April–July 2025

5 April

Event information lock

This is the deadline for finalising event details. After this time, you no longer have access to your event before publishing, and cannot make any changes.

5 May

LFA2025 Programme launch

w/c 19–26 May

LFA2025 Merchandise collection

1 June

The Festival begins!

5, 12, 19 and 26 June

Studio Late evenings

7 July

Event feedback form + imagery deadline

By submitting an event you agree to complete LFA's feedback form, as well as upload any photos or videos from your event. More info can be found in the

[Account section of the LFA website here.](#)

LFA event FAQ

Below you can find the answers to commonly asked questions about LFA events. For general LFA queries, head to the [LFA FAQ page here](#). If you can't find the answer to your question, please join the LFA2025 Organiser calls, Mentor Surgery Days, or email the LFA team at info@londonfestivalofarchitecture.org. Please be aware that although we will try to respond as quickly as possible, we are a small team and responses may not always be immediate.

Do I need to be an architect to be involved with the Festival?

No! The LFA programme is built up of events and projects led by the people who live, shape, and truly know London. It's the breadth and collaborative creativity of the event organisers that delivers such a varied and engaging programme of events for the Festival each June.

Do I need to have run an event before?

No! We work year-round to help new individuals and organisations feel empowered to stage their own Festival events and welcome everyone into the conversation around architecture and our city. This is done through the LFA Mentors programme, LFA Organiser Calls, resources, and location briefings.

Does my event have to last the whole of June?

No, you can choose how long your event lasts for, it can be one hour, one day or the whole month! The length also depends heavily on the type of event. For example, a workshop may just last one or two hours on one day, whereas an exhibition could last a week or a month.

What kind of information do I need to submit to the Festival?

To start with you will need an event title, a description of the event, and an image that captures the event. We will also need to know whether you have a venue and funding secured yet or not. Other key information, along with a complete checklist can be found in the [Account section of the LFA website here](#).

How many events can I submit?

Each organisation can submit up to three events to take place during the festival. For multiple versions of the same event (such as walking tours), there is a limit of two versions of the same event. This is reviewed on a case-by-case basis. Please note, each event will be reviewed and charged separately.

How will visitors know our event is part of LFA? Does LFA provide branding for organisers?

Each year LFA provides a range of complimentary digital assets and physical merchandise for organisers to use. You'll find a range of material with your LFA account ahead of the programme launch, including the LFA logo.

Do organisers need to raise sponsorship for their event?

Each event needs to be fully funded to take part in the programme. If your event is not funded, the team will not be able to accept it into the programme. Some people approach potential sponsors to help cover the costs of their event(s). However, please to be careful about promising benefits that can only be delivered by the LFA team or LFA website.

(Continues overleaf)

LFA event FAQ (continued)

Can LFA pay for my event?

LFA is not able to directly offer funding to support your Festival activity – much of the funding we generate goes directly into supporting the programmes and activities we run and resources we create. However, each year we work to match-make organisers with free venues across the city and leverage our community to create opportunities for spaces and funding for many of our organisers. The earlier you submit your event proposal, the higher the chance we will be able to offer help and guidance.

How does ticketing work for LFA?

Organisers can select if the event is a drop-in or ticketed event. For either, there is the option to add in a booking link – using a platform of your choice. We recommend using Eventbrite and have put together a document on how to set up and manage an Eventbrite event in the LFA Account section. Attendees can then save their favourite events to create a Festival Itinerary and book directly onto their chosen events. Recommendations about overbooking your event in order to control drop outs can be found in the Account section as well.

How do I promote my event?

The LFA team will help promote all events, but we also need your support to promote your own event(s) with your own audience. We've put together some top tips for promoting your event, you can find this in the [Account section of the LFA website here](#).

Are there any commitments for organisers post Festival?

By submitting an event you agree to complete LFA's feedback form, as well as upload any photos or videos from your event(s). We ask this as we want to know how your event went and how many people attended. We also want to make sure your event is captured in our LFA archive. The feedback form can be found in the account section of the website. We need these returned by 7 July 2025.

Who are the LFA2025 Mentors?

Now in its third edition, our LFA Mentors Programme was created to help inspire, empower and upskill LFA event organisers with their Festival activity. This year's mentors include: **Yang Yang Chen** and **Roy Coupland** (Architects and Co-leads, CITIZEN, LSA), **Adrienne Lau** (Architect, designer and co-founder, Edgy Collective), **Claire Pollock** (Cultural producer and Partnerships Lead, Allford Hall Monaghan Morris Architects), **Rav Singh** (Founder, A Little History of the Sikhs) and **James Zatka-Haas** (Writer, artist and Co-founder, Dis). [Find out more about each person here.](#)

Still need inspiration for your event?

- Learn more about the LFA2025 theme with [this essay from the LFA team here](#).
- Listen to our upcoming theme-related podcasts, including our kick-off conversation with LFA Director Rosa Rogina and Curation Panel member Dhruv Gulabchande.
- Explore our archive of previous Festivals and events by [checking our Festival history page here](#) or [watching our LFA2024 Wrap Up video here](#).
- [Subscribe to the LFA newsletter here](#) to keep up to date with information and inspiration from the LFA team and community.
- Sign up for an LFA Organiser Call and/or Mentor Surgery Days – full list of dates can be found in the [Account section of the LFA website here](#).
- Check out the LFA2025 resources in the [Account section of the LFA website here](#), including the LFA2025 event submission checklist, inclusive and sustainable events guide and more.



Keep in contact

If you would like to contact the London Festival of Architecture team, please email info@londonfestivalofarchitecture.org or call 020 7636 4044 and a member of our team will respond as soon as possible.

For all press-related enquiries, please contact chris.forsdike@nla.london.

If you're interested in supporting the London Festival of Architecture, please contact shannan.wood@nla.london.

Stay up to date with the latest news, competitions and event organising by [signing up to our newsletter here](#).

Follow LFA on social media:

