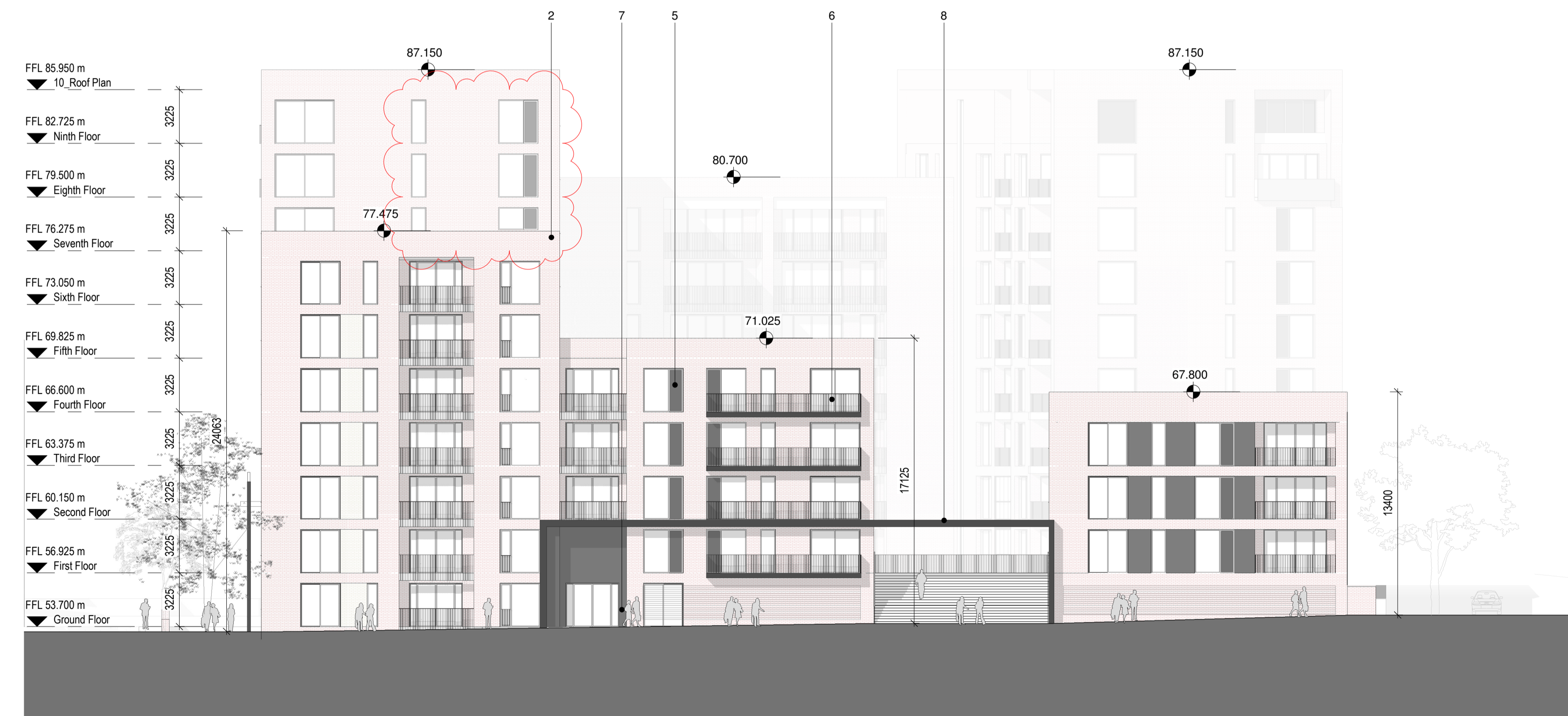


1 Block 1D_North Elevation
1 : 200

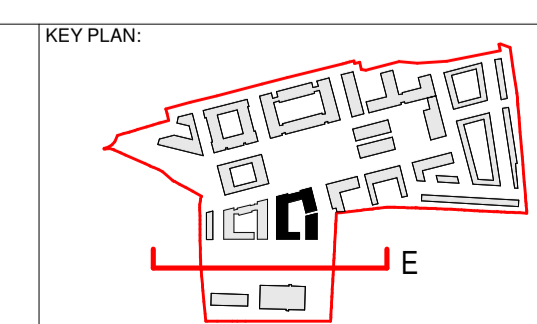


2 Block 1D_East Elevation
1 : 200

REV.	DATE	DETAILS	INITIALS
A	25/08/2021	Winter Gardens	JG
B	20/10/2021	Glass screens to Balconies	JG
C	15/06/2022	Apartment Layout Changes	JG

- KEY TO MATERIAL:
1. Yellow Brick, horizontal stretcher course, bedded in white mortar
 2. Red Brick, horizontal stretcher course, bedded in white mortar
 3. White Brick, horizontal stretcher course, bedded in white mortar
 4. Aluminum joinery with Aluminum External Framing, colour White (set in white brick) & graphite Grey (set in red and yellow brick)
 5. Feature window vent openings to be provided in lacquered timber panel, within window fabrication
 6. Handrails/ Balustrades in black painted mild steel circular section vertical rails, with flat plate black painted mild steel handrail

7. Base plinth in grey Limestone laid in 300mm/ 450mm horizontal coursing
8. Parapets, copings & flashings in naturally patinated zinc sheeting
9. Glass Handrail
10. Architectural banding, coping to top of brickwork & localized detail executed with natural white granite stone
11. Dark Grey Renson Linarte facade



		Chancery Lane, Dublin 8, Ireland. W: www.plusarchitecture.ie T: 353 (0) 1 521 3378	
PROJECT:	North London Business Park	PROJECT:	211
CLIENT:	The Comer Group	DRAWING NO.:	211_1D_04_01
TITLE:	Block 1D_North & East Elevation	REVISION NO.:	C
ISSUE TYPE:	Planning	DRAWN BY.:	JG
		CHECKED BY.:	DT
		DATE:	27/05/2022
		SCALE AT A1.:	1 : 200
		SCALE AT A3.:	