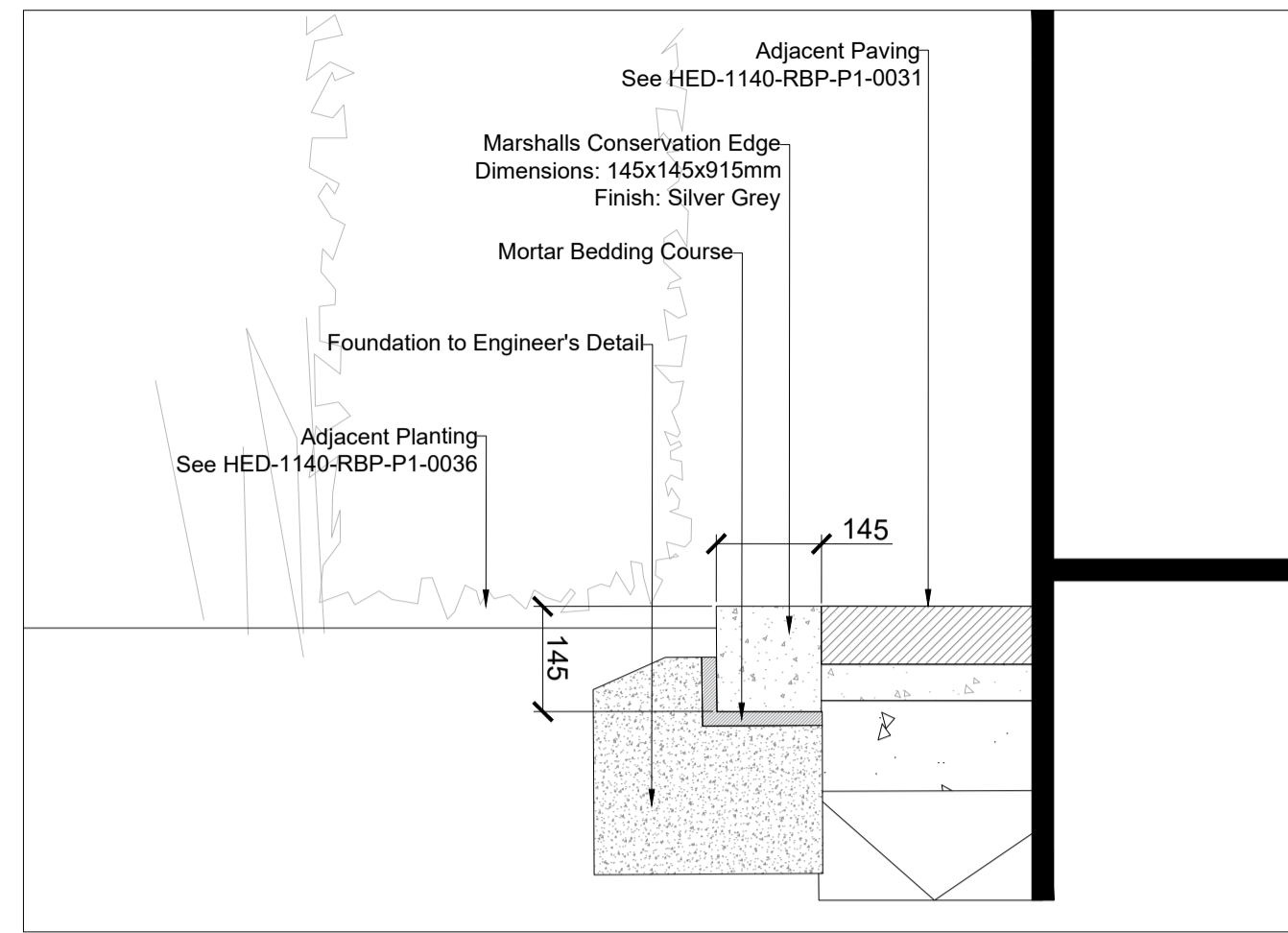
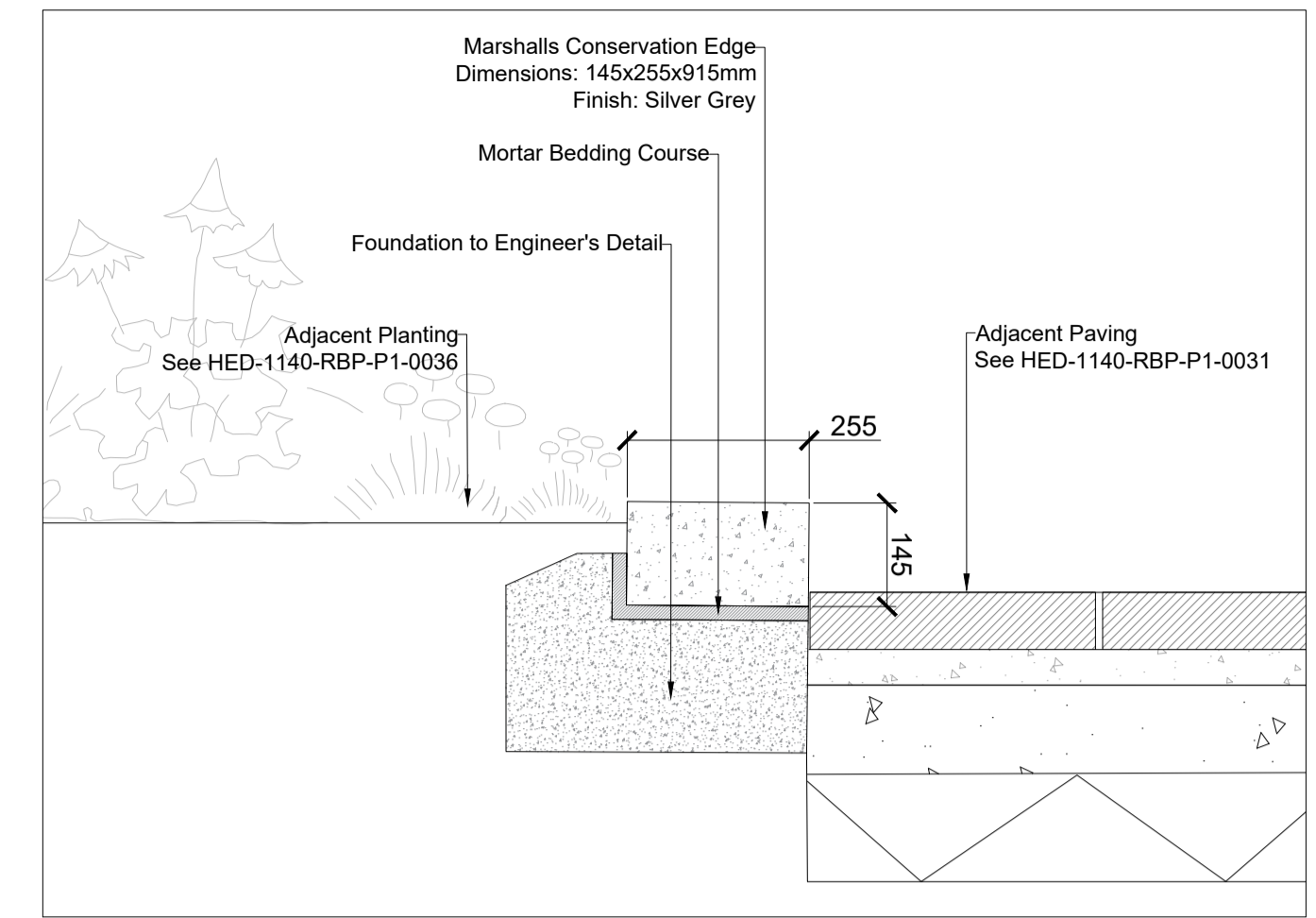


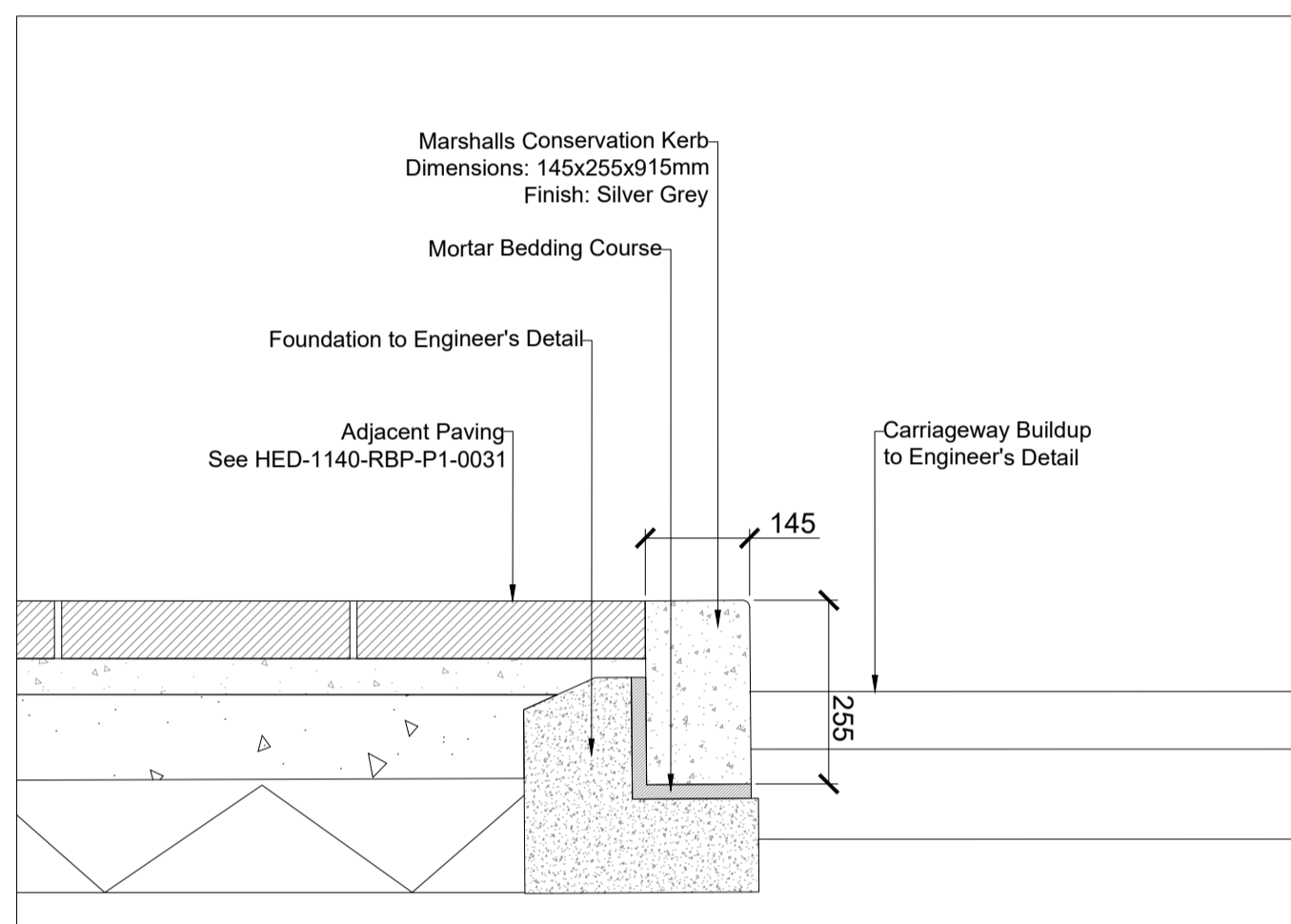
1 Aluminium Edge to Soft Landscape
1:10@A1



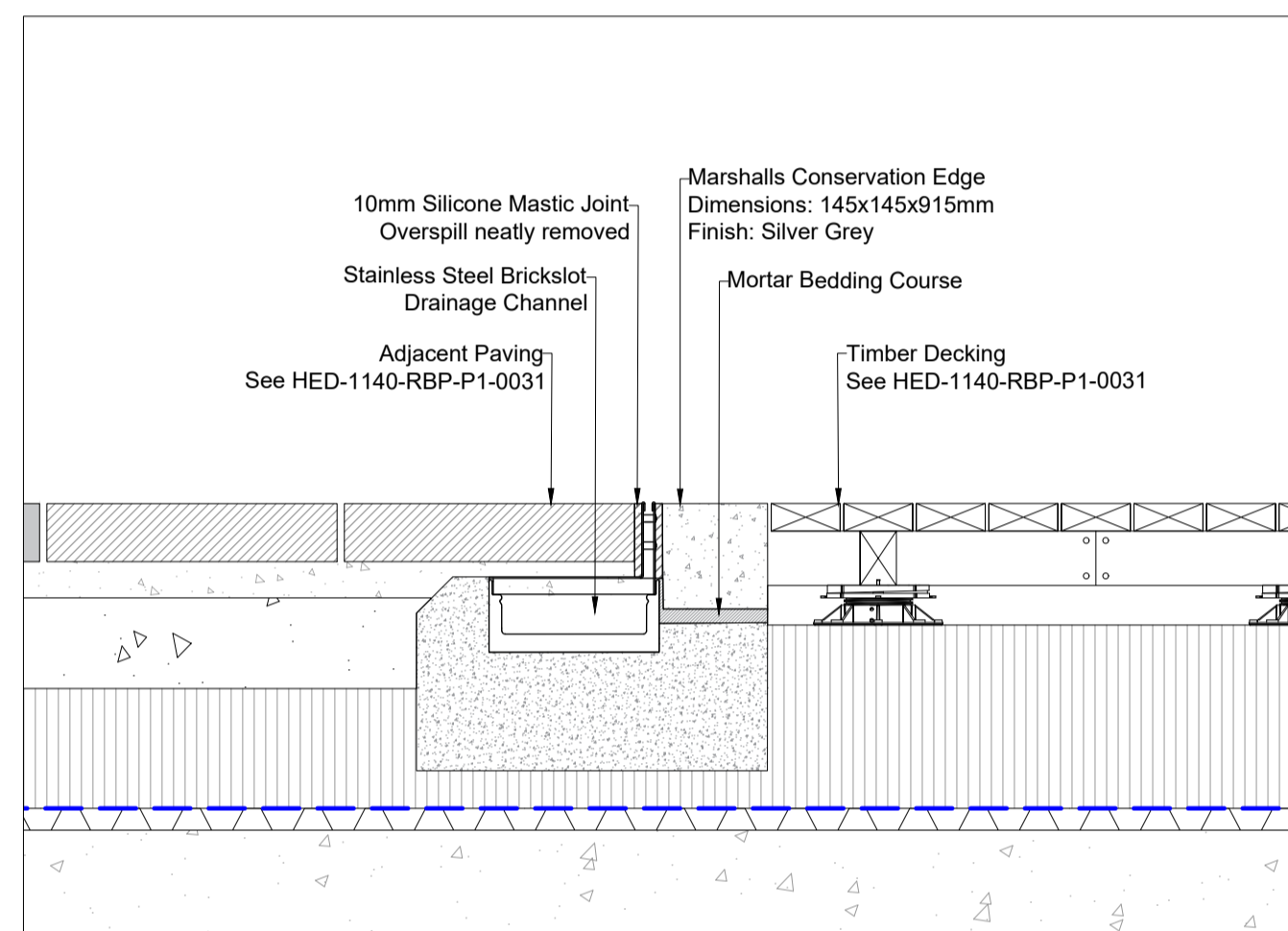
2 Conservation Edge - 145x145mm
1:10@A1



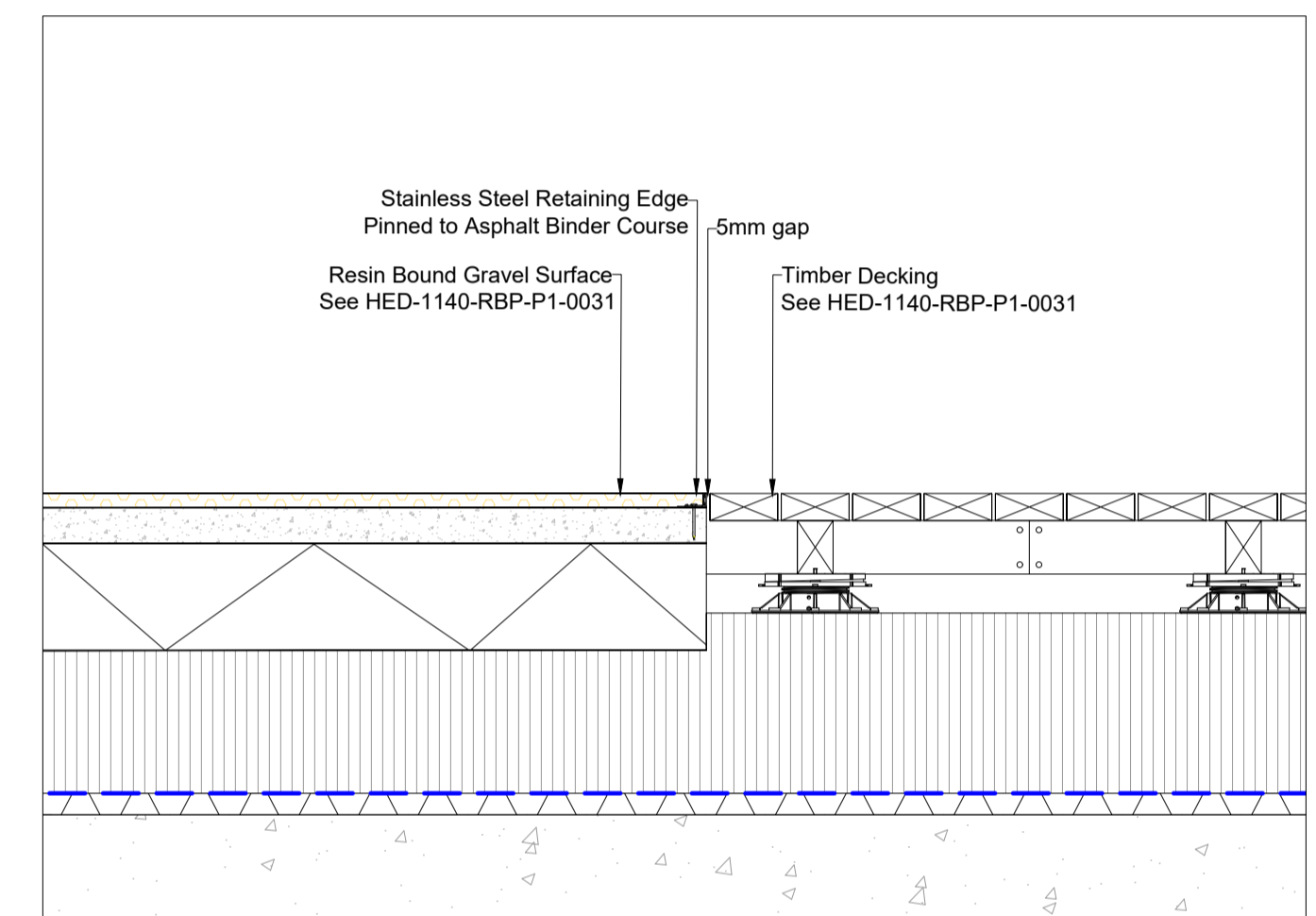
3 Conservation Edge - 255x145mm
1:10@A1



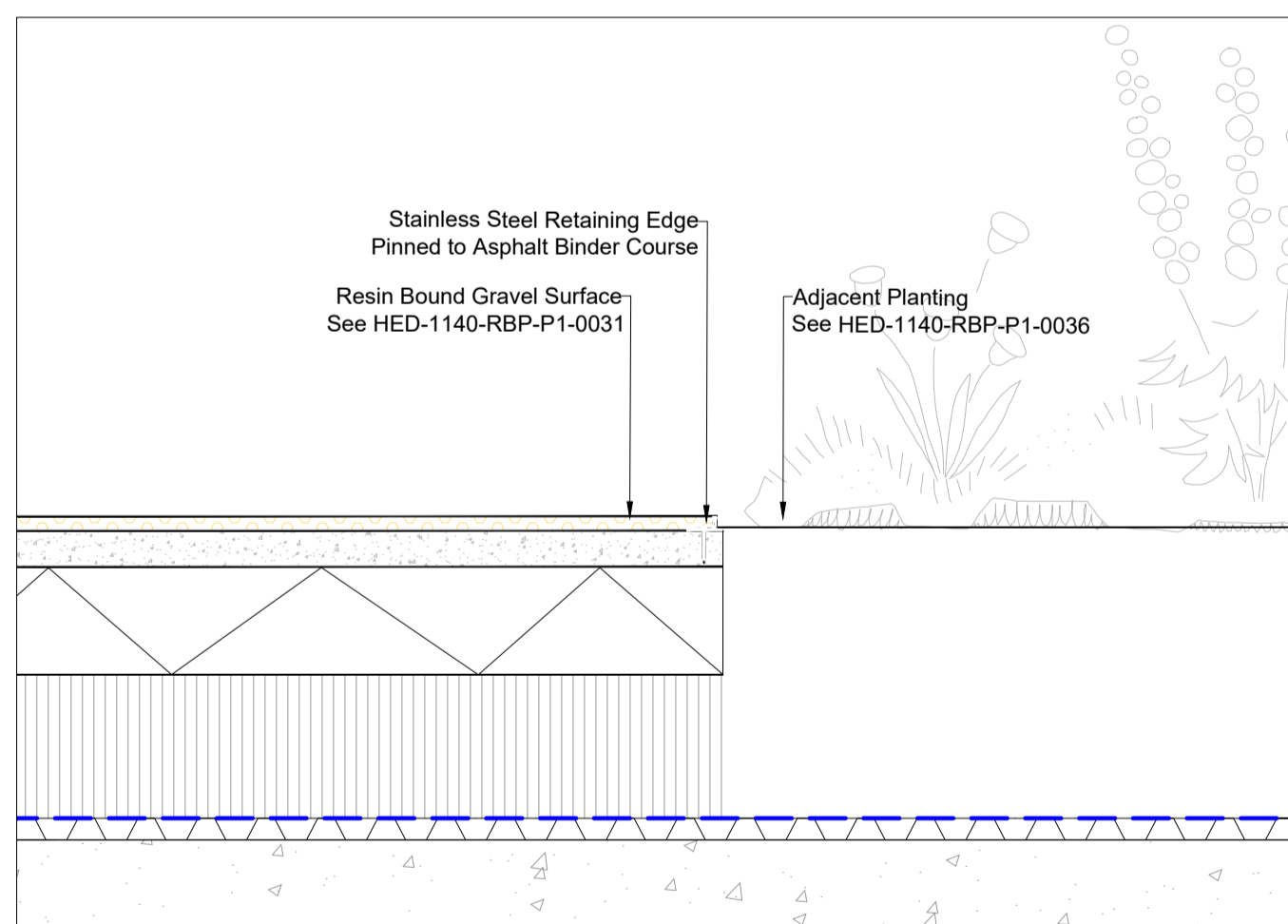
4 Conservation Kerb
1:10@A1



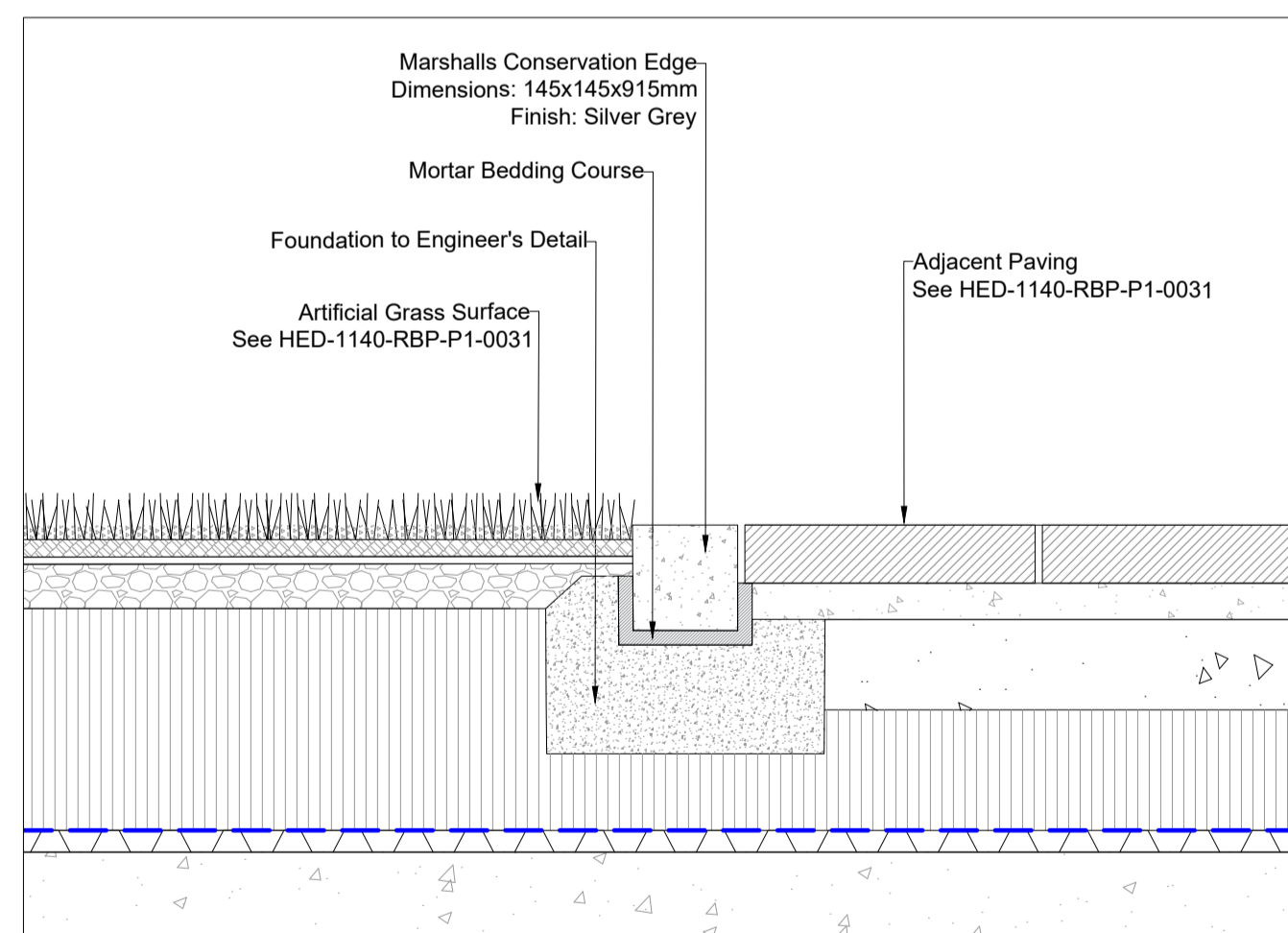
5 Interface - Paving Type 3, Brickslot Drainage Channel, Conservation Edge, Timber Decking
1:10@A1



6 Interface - Resin Bound Gravel, Timber Decking
1:10@A1



7 Interface - Resin Bound Gravel, Soft Landscape
1:10@A1



8 Interface - Artificial Grass, Conservation Edge, Paving Type 3
1:10@A1



NOTES:
This drawing is the copyright of Hyland Edger Driver. It must not be copied or reproduced without written consent. Only figured dimensions are to be taken from this drawing. All contractors must visit the site and be responsible for taking and checking all dimensions related to the works shown on this drawing.

REVISIONS

REVISIONS

REVISIONS

00. Issue for Planning 28.06.21	

DATE

28.06.21	DRAWN BY	CHECKED BY
	JSW	AW

PROJECT
Royal Brunswick Park
DRAWING TITLE
Hard Landscape Interfaces
DRAWING NUMBER
HED-1140-RBP-P1-1033

REVISION
00

CLIENT
COMER GROUP

H E D Hyland Edger Driver
Landscape Architects
& Urban Designers
London & Winchester
One Wessex Way, Colden Common, Winchester SO21 1WG
Waterloo Court, 10 Theed Street, London, SE1 8ST
1.01962 711 600
1.020 7603 9636

1:10

1:10

filename: w:\1140_royal_brunswick_park\cad\drawings\detail\planning\detail\hed-1140-rbp-p1-0033.dwg, printed on: 2021-06-24 on previous paper size (841.00 x 594.00 mm) @ 100% of original scale