
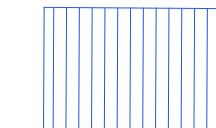
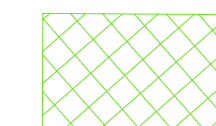





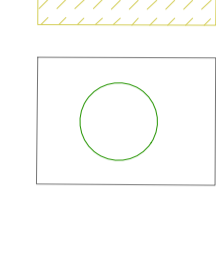
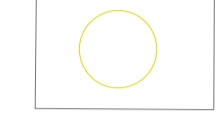
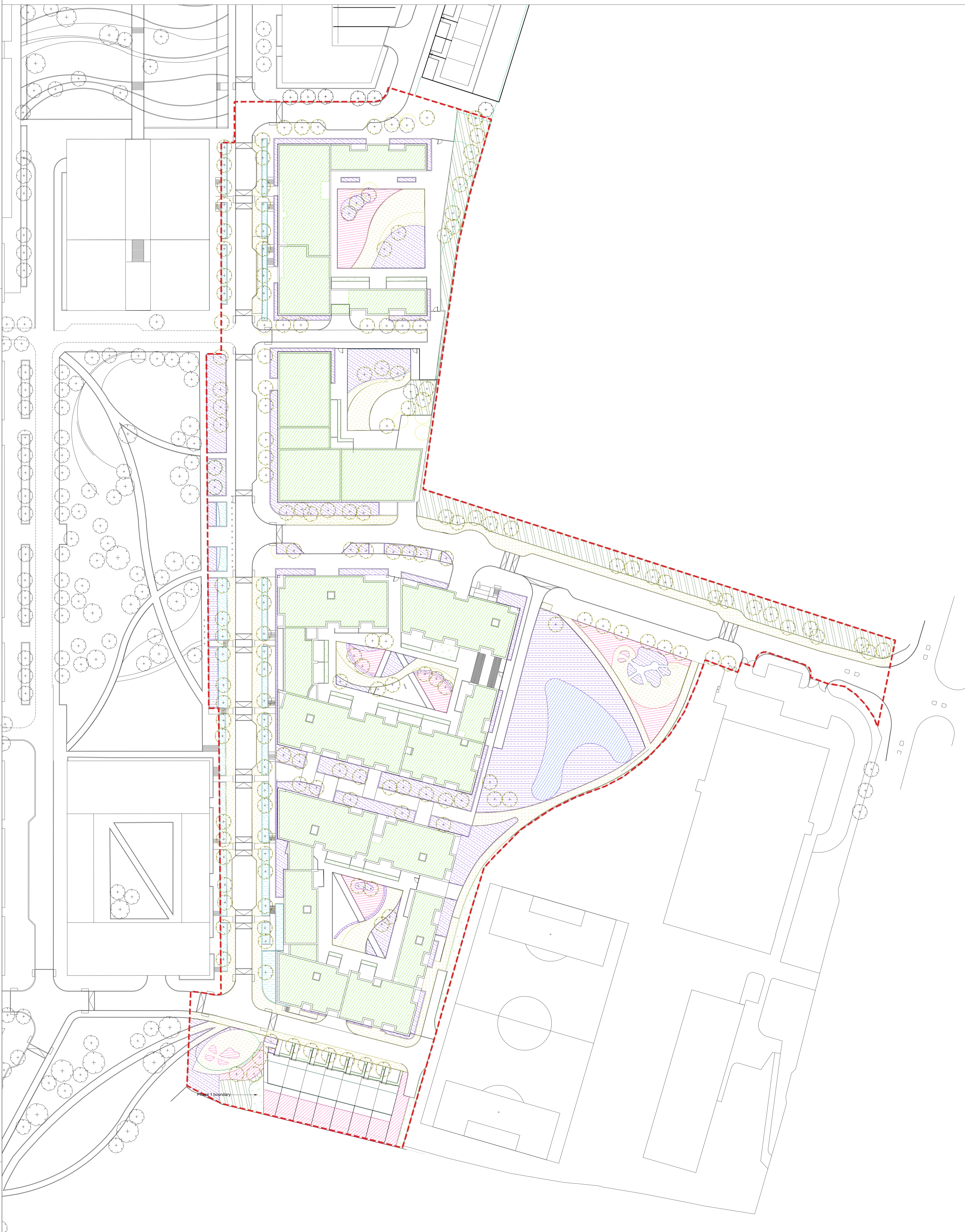
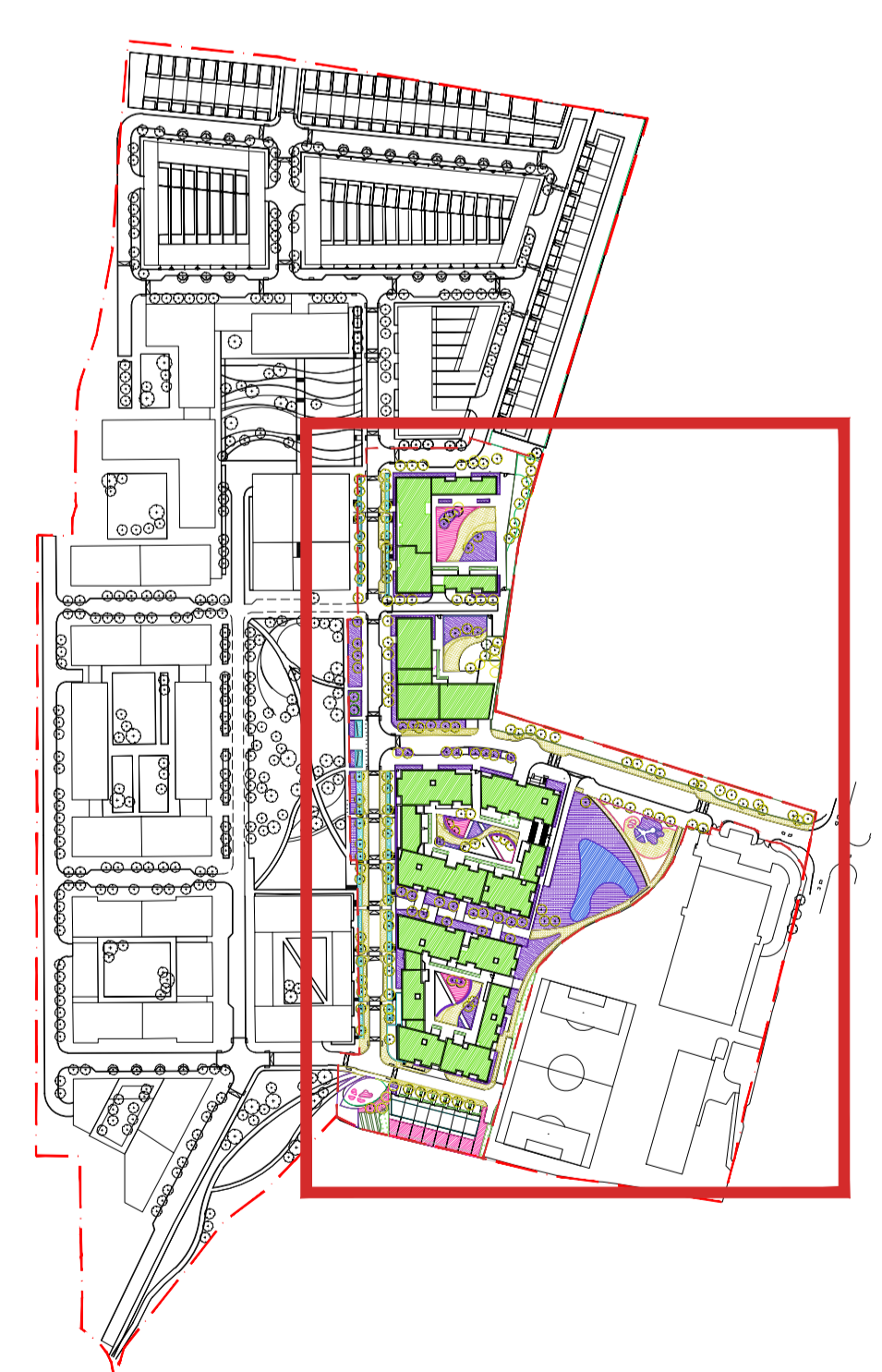


- KEY**
-  Semi-natural vegetation
 -  Wetland or open water
 -  Intensive green roof or vegetation over structure
 -  Rain gardens
 -  Hedge
 -  Flower-rich Perennial Planting
 -  Amenity grassland
 -  Permeable paving
 -  Standard trees planted in connected tree pits with a minimum soil volume equivalent to at least two thirds of the projected canopy area of the mature tree.
 -  Standard trees planted in pits with soil volumes less than two thirds of the projected canopy area of the mature tree.



Key Plan Not to Scale



Urban Greening Factor Calculator				
Surface Cover Type	Factor	Area (m ²)	Contribution	Notes
Semi-natural vegetation (e.g. trees, woodland, species-rich grassland) maintained or established on site.	1	1964	1964	
Wetland or open water (semi-natural; not chlorinated) maintained or established on site.	1	630	630	
Intensive green roof or vegetation over structure. Substrate minimum settled depth of 150mm.	0.8	7329	5863.2	
Standard trees planted in connected tree pits with a minimum soil volume equivalent to at least two thirds of the projected canopy area of the mature tree.	0.8	6584	5267.2	
Extensive green roof with substrate of minimum settled depth of 80mm (or 60mm beneath vegetation blanket) – meets the requirements of GRO Code 2014.	0.7		0	
Flower-rich perennial planting.	0.7	4596	3218.6	
Rain gardens and other vegetated sustainable drainage elements.	0.7	839	587.3	
Hedges (line of mature shrubs one or two shrubs wide).	0.6	457	274.2	
Standard trees planted in pits with soil volumes less than two thirds of the projected canopy area of the mature tree.	0.6	3790	2274	
Green wall – modular system or climbers rooted in soil.	0.6		0	
Groundcover planting.	0.5		0	
Amenity grassland (species-poor, regularly mown lawn).	0.4	1278	511.2	
Extensive green roof of sedum mat or other lightweight systems that do not meet GRO Code 2014.	0.3		0	
Water features (chlorinated) or unplanted detention basins.	0.2		0	
Permeable paving.	0.1	3739	373.9	
Sealed surfaces (e.g. concrete, asphalt, waterproofing, stone).	0		0	
Total contribution			20963.6	
Total site area (m²)				37033
Urban Greening Factor				0.57