

# Tree Constraints Plan showing proposed layout against BS5837:2012 tree categories & Root Protection Areas

**BS5837 Categories**  
Canopy and stem colour denotes BS5837 category. Pink denotes Root Protection Area.

- Category A (Green)
- Category B (Blue)
- Category C (Green)
- Category U (Dark Red)

**Category A**  
Trees of high quality with an estimated remaining life expectancy of at least 40 years.

**Category B**  
Trees of moderate quality with an estimated remaining expectancy of at least 20 years.

**Category C**  
Trees of low quality with an estimated remaining life expectancy of at least 10 years, or a stem diameter below 150mm.

**Category U**  
Trees in such a condition that they cannot realistically be retained as living trees in the context of the current land use for longer than 10 years.

**Retained Trees Groups**  
Surveyed tree groups with BS5837 Category denoted by hatch colour.

**Removed Trees Groups**  
Trees proposed for removal as they cannot be realistically retained within the new site layout.

**Removed Trees Groups**  
Surveyed tree groups with BS5837 Category denoted by hatch colour. (Yellow circles within removed group indicate some trees will be retained).

**Proposed New Tree Planting**  
See Appendix 7 for a summary, and the Landscaping Strategy that accompanies the application for full details.

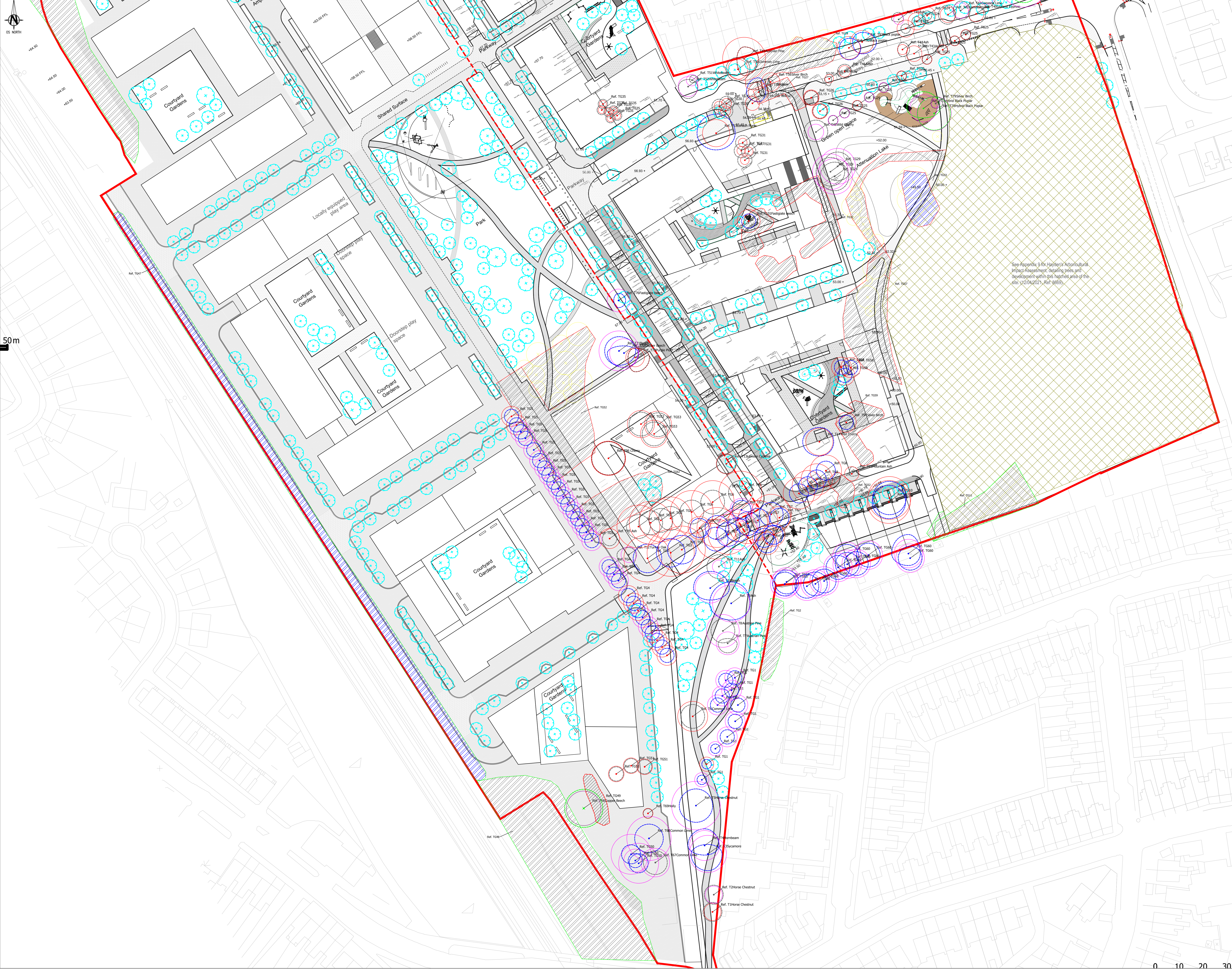


1	5515101r04Aug21_TCPex_FV1	04/08/21
No.	Revision/Issue	Date

**Greengage**  
9 Holyrood Street  
SE1 2EL  
Tel: 0203 544 4000

**Project Name and Address**  
North London Business Park  
Brunswick Park Rd  
London  
N11 1GN

Project	North London Business Park	Sheet	South
Date	04/08/2021		
Scale	1:500 at A0		



0 10 20 30